

# Providing and Paying for School Health Services Through Community Partnerships

Karen Erwin, RN, MSN  
Angela McDonald, RN, ADN

---

---

---


---

---

---

---

---



# Providing and Paying for School Health Services Through Community Partnerships

**Speakers:**  
**Karen Erwin, RN, MSN**, is the Kentucky Education School Nurse Consultant. For the past fourteen years, Ms. Erwin has provided consultation and technical assistance to state and local school boards of education, individual public schools and local and state health departments on the delivery of school health services, including school based health services. Ms. Erwin was instrumental in revising of state regulations for school health services, which now require standardized training for unlicensed assistive school personnel. Ms. Erwin has nationally and locally presented on school health services and has been an author of school health services articles, publications, state guidelines, protocols and manuals.  
**Angela McDonald, RN**, is a resource management analyst for the Kentucky Department of Education. For the past two years, Ms. McDonald has provided support and technical assistance to state and local school boards of education, individual public schools and local and state health departments on the delivery of school health services, including school based health services, as well as the use of student health data collection in the state student information system. Prior to her current position, she was a school nurse for 10 years and a district health coordinator for 6 years.

**Session Objectives:**

1. Understand definition of school health services requirements in Kentucky schools.
2. Explain role of Community Health Center
3. Identify two positive outcomes from the collaboration between school district and Community Health Center.

2

---

---

---


---

---

---

---

---



# Disclosure

We, the presenters of this session: Karen Erwin and Angela McDonald, disclose the absence of personal financial relationships with any commercial interest relevant to this educational activity within the past 12 months.

3

---

---

---

---

---

---

---

---

### Kentucky School Health Services Requirements

- ▶ KRS 156.502 requires school health services to be provided so that students are not denied attendance or participation in school activities due to necessary health service
- ▶ Defines health service as the administration of a medication, a clinical procedure or use of medical equipment




---

---

---

---

---

---

---

---

### Kentucky School Health Services Requirements

- ▶ Kentucky has 173 school districts, 1,173 schools and 564 school nurses (1:1,162 school nurse to student ratio)
- ▶ NASN recommends school nurse to student ratio of 1:750
- ▶ No state funding is provided for compliance with this statute
- ▶ All funding for school health services comes from district general fund, contracts with LHD or health care providers, some Medicaid reimbursement for school based health services




---

---

---

---

---

---

---

---

### Wayne County Kentucky

- ▶ A rural community located in south-central Kentucky that borders Tennessee
- ▶ Average median household income \$29,500
- ▶ Percentage of residents living in poverty (2015):  
Wayne Co 26.5%  
Kentucky 18.5%




---

---

---

---

---

---

---

---

### Wayne County Schools

- ▶ 5 schools: 1 Early Learning Center, 2 Elementary, 1 Middle and 1 High School
- ▶ 3,000 students, 79% Free/Reduced Lunch
- ▶ Many students unable to be seen by medical provider due to no insurance, inability to pay for services, lack of transportation, etc.
- ▶ School district unable to pay for a full time nurse in each school due to shrinking school financial resources



7

---

---

---

---

---

---

---

---

### Community Partnership Assistance

- ▶ Cumberland Family Medical Center, Inc. (CFMC) – FQHC
- ▶ CFMC provides Healthy Kids Clinic services in nine school districts
- ▶ Mission is to increase access to comprehensive primary and preventative health care to eliminate health disparities to the medically underserved
- ▶ Healthy Kids Clinic serves not only students but also school staff
- ▶ Through a partnership with CFMC, school districts establish school based health centers at each school site that have the capacity to impact the success of all students by addressing health care obstacles that derail them from educational attainment



8

---

---

---

---

---

---

---

---

### Community Partnership

- ▶ School district continues with school health services with school nurse triage and additional screening/ evaluation by Advanced Practice Registered Nurse (APRN) as needed
- ▶ APRN provided by CFMC available for acute care, chronic care, and preventative care visits for students
- ▶ Parent permission received for APRN to see student
- ▶ APRN also available to see school staff



9

---

---

---

---

---

---

---

---

### Community Partnership Results



10

---

---

---

---

---

---

---

---

### Positive Results

School nurses document all health office visits in Infinite Campus (Kentucky Student Information System), including complaints, observations, interventions, discharges and referrals.



11

---

---

---

---

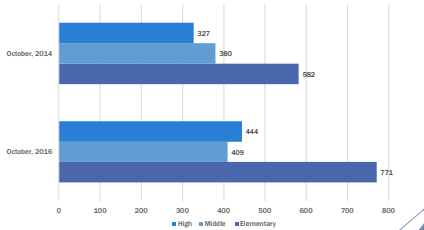
---

---

---

---

### Health Office School Nurse Visits October, 2014 vs. October, 2016



12

---

---

---

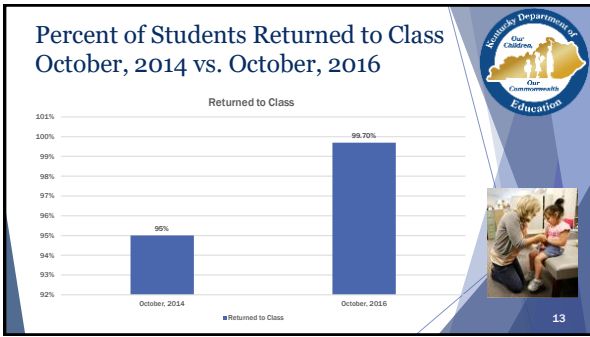
---

---

---

---

---



---

---

---

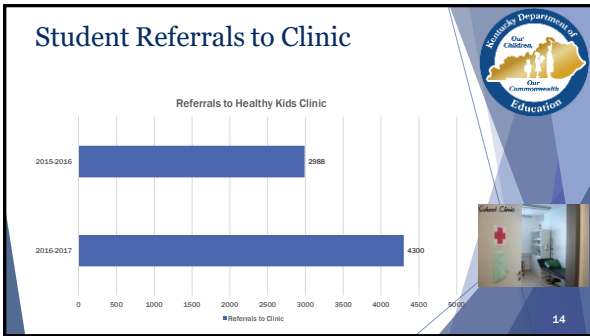
---

---

---

---

---



---

---

---

---

---

---

---

---

### Custom Reporting

The Kentucky Department of Education has worked closely with CFMC to build custom reports in Infinite Campus. These reports extract student health data and allows CFMC to meet reporting and billing requirements.

15

---

---

---

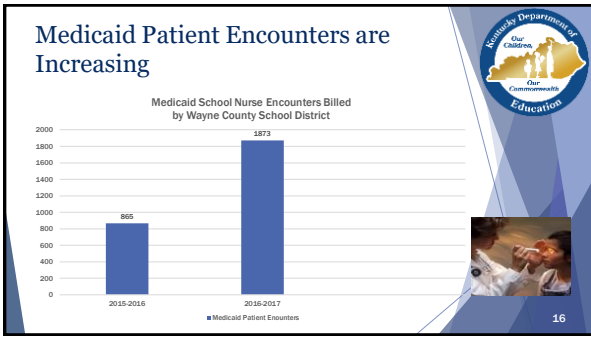
---

---

---

---

---




---

---

---

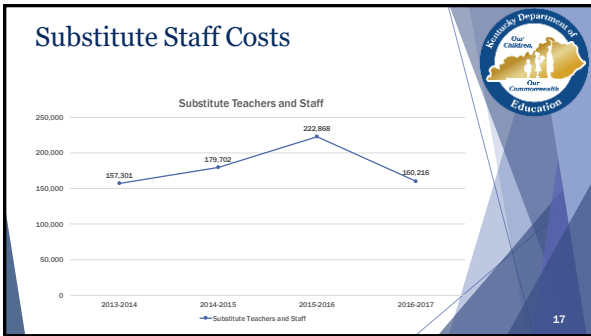
---

---

---

---

---




---

---

---

---

---

---

---

---

### Other Positive Results from Partnership

In 2014, Healthy Kids Clinics contributed 33% of school nurses salaries to the local board of education

For 2017, Healthy Kids Clinics will contribute 51% school nurses salaries to the local board of education

Wayne County Department of Education  
Our Children. Our Communities.

18

---

---

---

---

---

---

---

---



---

---

---

---

---

---

---

---